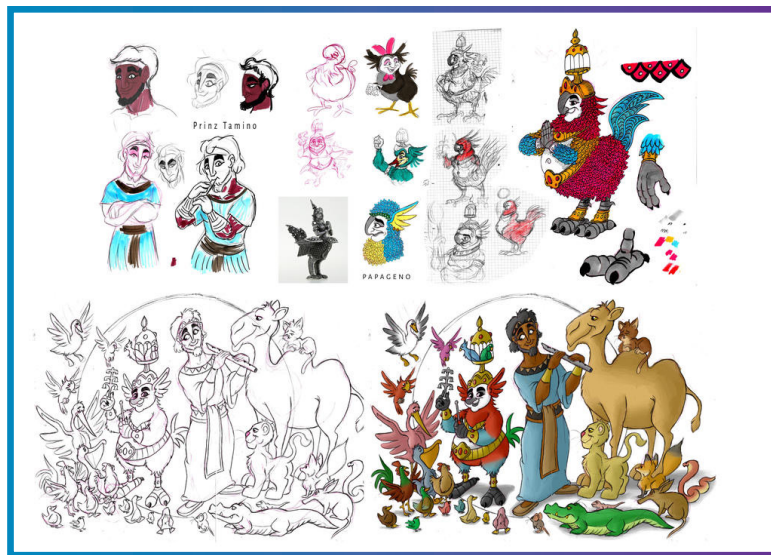


VISUAL ART ACTIVITY: SKETCH YOUR OWN DESIGNS

Sketch a costume for a character in *The Magic Flute*. The costume can be traditional (such as the image below) or it can be modern (if *The Magic Flute* was happening today in Canada, what would this character wear?). Encourage students to sketch in pencil and decide what the outfit would look like, then add the colour in.



Character design sketches for *The Magic Flute* by pineapplepidecd92 (2017).

Draw a set for a production of *The Magic Flute*. The set can be traditional (such as the image to the right) or it can be modern (if *The Magic Flute* was done today, what would it look like?). Encourage students to create several designs for different settings that exist within the opera, and tie them together with a common theme.

Set Design for a production of *The Magic Flute*. Notice how the artist didn't include any of the characters in his sketch.

